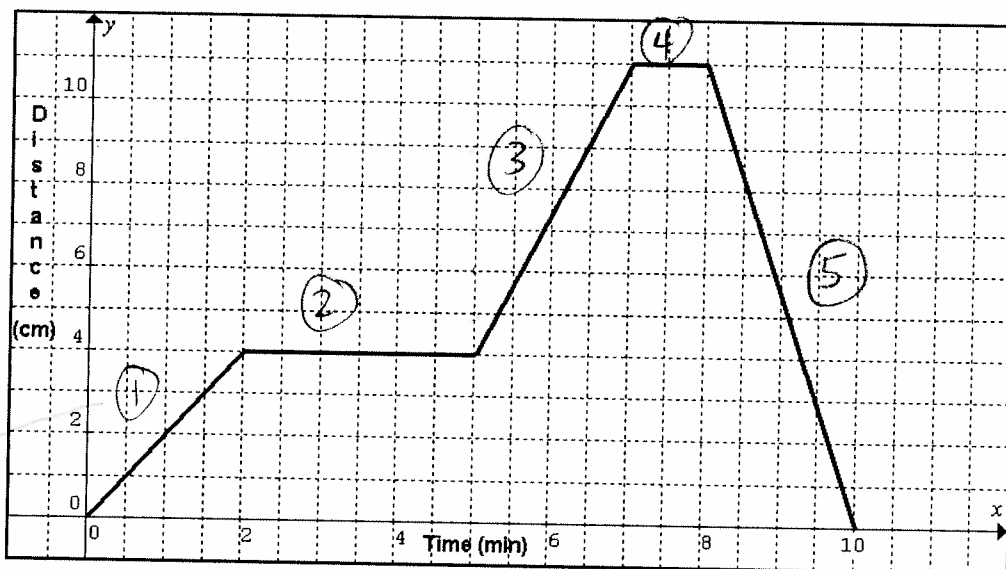


3. Linear Stories (Non-Linear Systems):

On your desk, a slug is sitting next to your eraser. Instead of paying attention to your teacher (bad move), you choose to graph the distance between the slug and your eraser over a 10 minute period. Describe the path taken by the slug.



Label Graph



In section One

- the slug moving away from the eraser at a steady rate of 2 cm/min
- it moved a total of 4 cm over 2 mins

In section Two

- the slug sat still for 3 mins at a position 4 cm away from the eraser

In section Three

- the slug moved at a steady rate of 3.5 cm/min ,
- it moved away over 2 mins for 7 cm

In section Four

- the slug sat still for 1 min at a position 11 cm away from the eraser.

In section Five

- the slug returned to the eraser at a steady rate of 5.5 cm/min . It covered 11 cm in 2 mins

Clear description of rate, time, distance